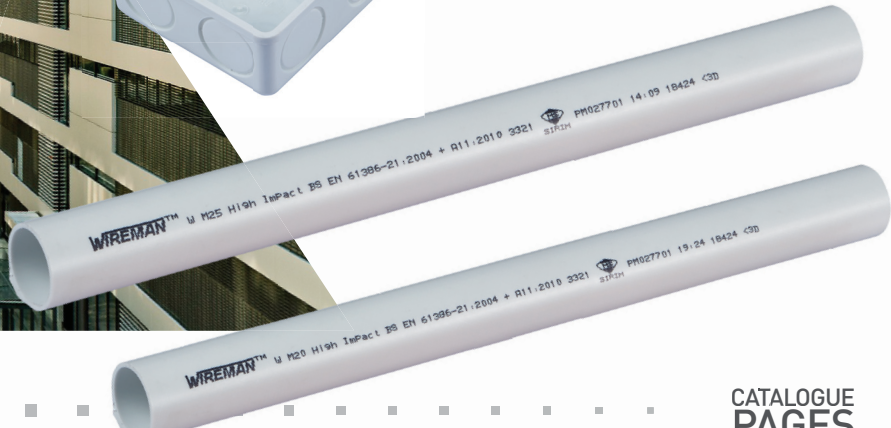


**WIREMAN**<sup>®</sup>

BEYOND  
EXPECTATIONS  
MEDIUM DUTY



CATALOGUE  
PAGES  
INSIDE  
→

THE GLOBAL SPECIALIST  
IN ELECTRICAL AND DIGITAL BUILDING INFRASTRUCTURES

 **MEGAPOWER** |  **legrand**<sup>®</sup>

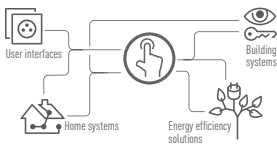
LEGRAND

# A GLOBAL PLAYER

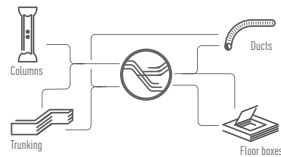
Legrand is the global specialist in electrical and digital building infrastructures. The group offers a comprehensive range of solution and services tailored to residential, commercial and industrial applications. The scope of its offering and its leading positions make Legrand a worldwide benchmark.

## 4 KEY AREAS OF EXPERTISE

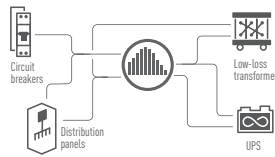
### CONTROL AND COMMAND



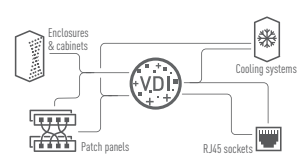
### CABLE MANAGEMENT



### ENERGY DISTRIBUTION



### DIGITAL INFRASTRUCTURE



TURNOVER  
NEARLY  
**€6.6 BILLION**  
IN TOTAL SALES IN  
2019

MORE THAN  
**36,000 EMPLOYEES**

INNOVATION  
**4.8% OF 2018  
SALES  
INVESTED  
IN R&D**

A WIDE CHOICE  
OF SOLUTIONS

OVER  
**230,000  
CATALOGUE  
ITEMS**

**80 PRODUCT  
FAMILIES**

SALES IN MORE THAN  
**80 COUNTRIES**

# WHO WE ARE

TRUSTED BRAND OVER  
30 YEARS

ISO CERTIFIED  
ISO 9001:2015  
Quality Management System  
ISO 14001:2015  
Environmental Management Systems

WORLD CLASS FACILITIES  
ON EXTRUSION  
& INJECTION

including tooling, testing and latest production technology such as compounding, on-line and off-line finishing, down-stream engineering and packaging

BUILD-UP AREA OF  
85,000 SQFT  
ON A 120,000 SQFT LANA

INTERNATIONAL PRESENCE OVER  
13 COUNTRIES

## LEGRAND MALAYSIA



## MEGAPOWER LEGRAND

Megapower was established in 1990 to serve and provide quality PVC cable management system and wiring accessories. We started production of a variety of high quality unplasticised polyvinyl (uPVC) products in its state-of-the-art factory, located in Selangor, 25KM away from Kuala Lumpur, Malaysia.

In 2011, a joint venture between Megapower and Legrand was formed marking a new association between two well-known brands in the industry. The association of two companies provided a stronger base expertise of one-stop solutions to serve the construction and electrical utilities.

**MD**  
Medium Duty  
332112

1

Mechanical Protection for durability against compression and Impact forces compliances to IEC 61386-21

# CONDUIT TESTED for Excellence



## COMPRESSION TEST

Endurability of compressive load over 750N.

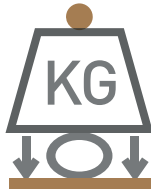


2

3

## IMPACT TEST

Resilience to impact forces over 2kg mass of hammer with fall height of 100mm



4

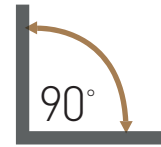
## NON-FLAME PROPAGATION

flame extinguished immediately after the source of the flame is removed.



5

## ABLE TO FORM 90 DEGREE with the aid of bending spring

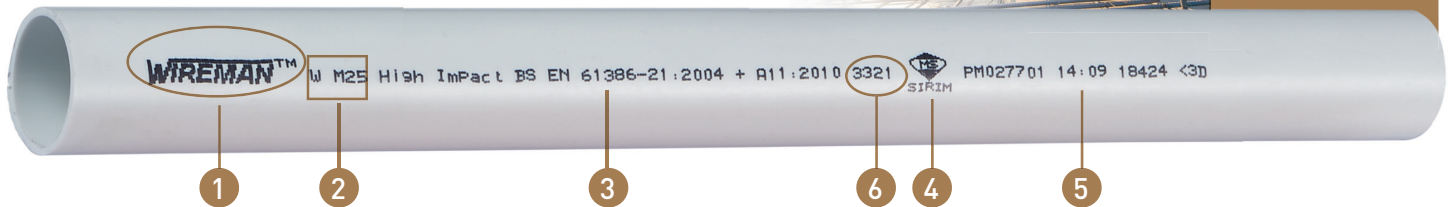


## HIGH INTERNATIONAL QUALITY STANDARD

Wireman is independently tested to meet the intended design and wiring application as stipulated by international standard IEC 61386 - 21



Delivers Medium Duty performance with time saving & lower installation costs for residential & commercial building.



- 1 Manufacturer and/or Brand name identification
- 2 Product Code
- 3 Compliance with International Standard IEC 61386-21
- 4 Sirim marking & certification number
- 5 Exact date and time of manufacture for easy tracking

- 6
  - 3- Compression rating (Rating 3 = Medium Duty)
  - 3- Impact rating (Rating 3 = Medium Duty)
  - 2- Min. Serving Temperature (Rating 2 = -5 °C)
  - 1- Max. Serving Temperature (Rating 1 = +60 °C)



## COMPREHENSIVE TERRITORY COVERAGE

Being part of the global coverage of Megapower Legrand, it provides a faster and easier integrated global system where purchases and logistics are effortlessly connected.

## ALWAYS MEET YOUR EXPECTATIONS

Stringent quality control and testing are employed for the International Electrotechnical Commission (IEC) 61386-21 Standard certification, which is the International Standard used for Conduit Systems for Cable Management. The manufacturing facility has also been awarded with ISO 9001:2015 Quality Management and ISO 14001:2015 Environmental Management Systems certifications.



## PROVEN RELIABILITY FOR 30 YEARS OF SUCCESSFUL PROJECTS

The most recognized uPVC conduit solution provider in Malaysia that constantly strives for the best quality and services with many reputable successful project references.

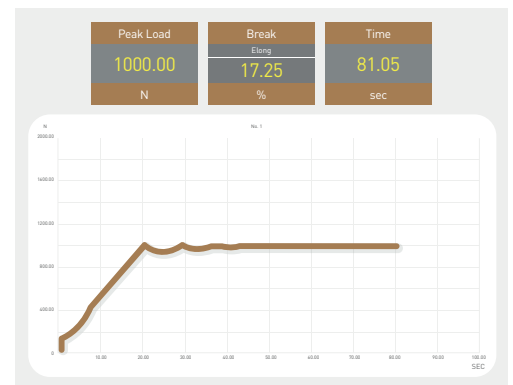


## SAVE TIME ON INSTALLATION

Our product are tested under heavier conditions than the normative for an over performing quality that always guarantees time saving for you.



Impact Test



Compression Test

## uPVC CONDUIT AND FITTINGS



### High Impact uPVC Conduit



QTY/ PACK	CAT. NOS	SIZE (mm)	LENGTH (m)	COLOR
50	EW M16	16	2.9	W
50	EW M20	20	2.9	W/O
50	EW M25	25	2.9	W/O
25	EW M32	32	2.9	W
20	EW M40	40	2.9	W
15	EW M50	50	2.9	W

### Terminal One Way Box



QTY/ PACK	CAT. NOS	SIZE (mm)	DIAMETER (mm)	COLOR
100	IWCB 20-1	20	65	W/O
100	IWCB 25-1	25	65	W/O
100	IWCB 32-1	32	75	W/O

### Through Two Way Box



QTY/ PACK	CAT. NOS	SIZE (mm)	DIAMETER (mm)	COLOR
100	IWCB 20-2	20	65	W/O
100	IWCB 25-2	25	65	W/O
100	IWCB 32-2	32	75	W/O

### Angle Two Way Box



QTY/ PACK	CAT. NOS	SIZE (mm)	DIAMETER (mm)	COLOR
100	IWCB 20-2A	20	65	W/O
100	IWCB 25-2A	25	65	W/O
100	IWCB 32-2A	32	75	W/O

### Tee Three Way Box



QTY/ PACK	CAT. NOS	SIZE (mm)	DIAMETER (mm)	COLOR
100	IWCB 20-3	20	65	W/O
100	IWCB 25-3	25	65	W/O
100	IWCB 32-3	32	75	W/O

### Intersection Four Way Box



QTY/ PACK	CAT. NOS	SIZE (mm)	DIAMETER (mm)	COLOR
100	IWCB 20-4	20	65	W/O
100	IWCB 25-4	25	65	W/O
100	IWCB 32-4	32	75	W/O

### Extension Ring



QTY/ PACK	CAT. NOS	HEIGHT (mm)	DIAMETER (mm)	COLOR
100	IWER-L	25	65	W
100	IWER-H	38	65	W
100	IWER-H50	50	65	W

### Lid Cover (Screw Type)



QTY/ PACK	CAT. NOS	SIZE (mm)	DIAMETER (mm)	COLOR
100	IWLC	20 & 25	65	W/O

### Protector Cover (Clip Type)



QTY/ PACK	CAT. NOS	SIZE (mm)	DIAMETER (mm)	COLOR
100	IWPC 20	20	65	W/O
100	IWPC 25	25	65	W/O

Color = W-White, O-Orange



## FITTINGS

### Inspection Tee



QTY/ PACK	CAT NOS.	SIZE (mm)	COLOR
100	IWIT 20	20	W/O
100	IWIT 25	25	W/O

### Inspection Bend



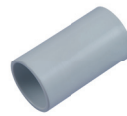
QTY/ PACK	CAT NOS.	SIZE (mm)	COLOR
100	IWIB 20	20	W/O
100	IWIB 25	25	W/O

### Inspection Elbow



QTY/ PACK	CAT NOS.	SIZE (mm)	COLOR
100	IWIE 20	20	W/O
100	IWIE 25	25	W/O

### Coupling



QTY/ PACK	CAT NOS.	SIZE (mm)	COLOR
100	IWC 20	20	W/O
100	IWC 25	25	W/O
100	IWC 32	32	W
100	IWC 40	40	W

### Female Adaptor



QTY/ PACK	CAT NOS.	SIZE (mm)	COLOR
100	IWFA 20	20	W/O
100	IWFA 25	25	W/O

### Reducer



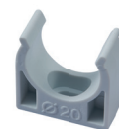
QTY/ PACK	CAT NOS.	SIZE (mm)	COLOR
100	IWR 20	20-25	W/O
100	IWR 32	25-32	W/O

### Bar Saddle



QTY/ PACK	CAT NOS.	SIZE (mm)	COLOR
100	IWBS 20	20	W/O
100	IWBS 25	25	W/O
100	IWBS 32	32	W/O

### Spring Clip Saddle



QTY/ PACK	CAT NOS.	SIZE (mm)	COLOR
100	IWSCS 20	20	W/O
100	IWSCS 25	25	W/O
100	IWSCS 32	32	W

### Dome Cover (Ø 65 mm)



QTY/ PACK	CAT NOS.	SIZE (mm)	COLOR
100	IWDC-C 20	20	W/O
100	IWDC-C 25	20	W/O

### Wire Puller



QTY/ PACK	CAT. NOS	SIZE (mm)	DIAMETER (mm)	COLOR
40	EWWP 4015	15	4.0	W/O
20	EWWP 4030	30	4.0	W/O

Color = W-White, O-Orange

## FITTINGS & WIRING ACCESSORIES

### Blank Plate



QTY/ PACK	CAT. NOS	SIZE (INCH)	TYPE	COLOR
100	IWBP - 1	3"x 3"	1 GANG	W
100	*IWBP - 1S	3"x 3"	1 GANG	W
100	IWBP - 2	3"x 6"	2 GANG	W

\*S = Slim

### Concealed Box



QTY/ PACK	CAT. NOS	SIZE (INCH)	TYPE	COLOR
100	IWKOB-1	3"x 3"	1 GANG	W
50	IWKOB-2	3"x 6"	2 GANG	W
50	IWKOB-3	3"x 7"	2x1 GANG	W
100	*IWKOB-1C	3"x 3"	1 GANG	W

\*Connectable Concealed Box

### Nylon Cable Tie



QTY/ PACK	CAT. NOS	LENGTH INCH	LENGTH (mm)	APPROX WIDTH (mm)	MAX. BUNDLE DIAMETER (m)	COLOR
1,000	OWCT 100/25	4	100	2.0 - 2.5	25	W/B
1,000	OWCT 140/36	5 1/2	140	3.0 - 3.6	35	W/B
1,000	OWCT 200/36	8	200	3.0 - 3.6	55	W/B
1,000	OWCT 200/48	8	200	4.0 - 4.8	55	W/B
1,000	OWCT 250/48	10	250	4.0 - 4.8	74	W/B
1,000	OWCT 300/48	12	300	4.0 - 4.8	85	W/B
1,000	OWCT 300/76	12	300	7.0 - 7.6	85	W/B
100	OWCT 370/48	14 1/2	370	4.0 - 4.8	102	W/B
100	OWCT 370/76	14 1/2	370	7.0 - 7.6	102	W/B
100	OWCT 430/48	17	430	4.0 - 4.8	125	W/B
100	OWCT 430/90	17	430	8.0 - 9.0	125	W/B
100	OWCT 450/76	18	450	7.0 - 7.6	130	W/B
100	OWCT 530/90	21	530	8.0 - 9.0	150	W/B
100	OWCT 720/90	28	720	8.0 - 9.0	190	W/B
100	OWCT 760/90	30	760	8.0 - 9.0	220	W/B
100	OWCT 790/90	31	790	8.0 - 9.0	230	W/B

### Vinyl Wire End Cap



QTY/ PACK	CAT. NOS	CABLE (mm) <sup>2</sup>	COLOR
100	OWEC - 1.25	1.5	B/BL/R/GN/Y
100	OWEC - 2	2.5	B/BL/R/GN/Y
100	OWEC - 3.5	4	B/BL/R/GN/Y
100	OWEC - 5.5	6	B/BL/R/GN/Y
100	OWEC - 8	10	B/BL/R/GN/Y
100	OWEC - 14	16	B/BL/R/GN/Y
100	OWEC - 22	25 & 35	B/BL/R/GN/Y
100	OWEC - 38	50	B/BL/R/GN/Y
100	OWEC - 60	70	B/BL/R/GN/Y
50	OWEC - 80	95	B/BL/R/GN/Y
50	OWEC - 100	120	B/BL/R/GN/Y
50	OWEC - 125	150	B/BL/R/GN/Y
50	OWEC - 150	185	B/BL/R/GN/Y
50	OWEC - 200	240	B/BL/R/GN/Y
50	OWEC - 250	300	B/BL/R/GN/Y
25	OWEC - 325	350	B/BL/R/GN/Y
25	OWEC - 400	400	B/BL/R/GN/Y
25	OWEC - 500	500	B/BL/R/GN/Y
25	OWEC - 630	630	B/BL/R/GN/Y

### Nylon Cable Marker Tie



QTY/ PACK	CAT. NOS	LENGTH (INCH/mm)	WIDTH (mm)	MAX. BUNDLE DIA (mm)	COLOR
1000	OWCMT 110 / 25BT	4 1/4 / 110	2.5	19	W
1000	OWCMT 100 / 25ST	4 / 100	2.5	19	W

### Spiral Band



CAT. NO	WRAPPING RANGE (mm)	COLOR
EWSB - 6	10 - 50	W/B
EWSB - 8	15 - 60	W/B
EWSB - 10	20 - 60	W/B
EWSB - 12	20 - 65	W/B
EWSB - 15	20 - 70	W/B
EWSB - 19	25 - 100	W/B
EWSB - 24	30 - 130	W/B

### Nylon Cable Tie Mount



QTY/ PACK	CAT. NOS	L x W (mm)	COLOR
500	OWCTM 19	19 x 19	W
500	OWCTM 28	28 x 28	W

### OVAL GRIP FM TYPE CABLE MARKER



QTY/ PACK	CAT. NOS	MARKING	CABLE DIA (mm)
500	OWCMFM	0-9 A - Z + - /	3.5 - 7.0

Color = B-Black, W-White, BL-Blue, R-Red, GN-Green, Y-Yellow





## CORRUGATED CONDUIT AND WATERTIGHT FLEXIBLE CONDUIT (EF TYPE)



### Corrugated Conduits



QTY/ PACK	CAT. NOS	SIZE (mm)	LENGTH (m)	COLOR
7	EWCC 16	16	50	W/B
7	EWCC 20	20	40	W/B
7	EWCC 25	25	40	W/B
3	EWCC 32	32	25	W/B
3	EWCC 40	40	25	W/B
3	EWCC 50	50	25	W/B

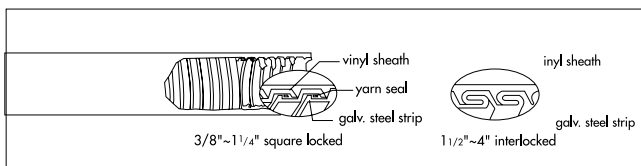
### Corrugated Conduit Adaptor (Screw Type)



QTY/ PACK	CAT. NOS	SIZE (mm)	COLOR
100	IWCCA 20	20	W/B
100	IWCCA 25	25	W/B



### Watertight Flexible Conduit (EF Type)



- Galvanized steel core, with flame retardant PVC coated.
- High flexibility, absolutely moisture-proof.
- Absorbs motion, vibration and bending indefinitely.
- Cord packing size form 3/8" through 1-1/4" by squarelocked. 1-1/2" through 4" by interlocked.
- Temperature range from - 10 °C ~ +70 °C.
- IP66 Dust / weatherproof

QTY/ PACK	CAT. NOS	SIZE (INCH)	VINYL SHEATH THICKNESS (mm)	MIN. BENDING RADIUS (mm)	PER COIL (m)
1	OWBA 206703/M	3/8"	1.0	60	50
1	OWBA 206704/M	1/2"	1.0	80	50
1	OWBA 206704	1/2"	1.0	80	50
1	OWBA 206706/M	3/4"	1.0	100	30

Color = W-White, B-Black, O-Orange, MM-Yellow, NPT-Blue

### Watertight Straight Adaptor



QTY/ PACK	CAT. NOS	SIZE (INCH)	THREAD
100	OWBB 210103	3/8"	MM/NPT
100	OWBB 210104	1/2"	MM/NPT
100	OWBB 210106	3/4"	MM/NPT
100	OWBB 210110	1"	MM/NPT
100	OWBB 210112	1 1/4"	NPT
100	OWBB 210114	1 1/2"	NPT
100	OWBB 210120	2"	NPT
100	OWBB 210124	2 1/2"	NPT
100	OWBB 210130	3"	NPT
100	OWBB 210140	4"	NPT



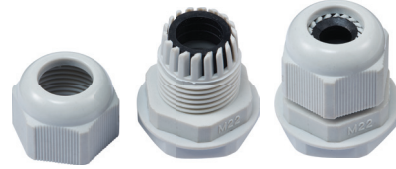
Discover more comprehensive range of PVC-Link heavy-duty uPVC conduit solutions

# WEATHERPROOF ENCLOSURE BOX IP56 & CABLE GLAND IP68

## Weatherproof Enclosure Box IP56



## Weatherproof PG-Gland IP68



QTY/ PACK	CAT. NOS	LxWxH (mm)	COLOR
150	IWEB 442	110 x 110 x 60	G
90	IWEB 444	110 x 110 x 110	G
72	IWEB 643	155 x 115 x 80	G
50	IWEB 644	155 x 115 x 110	G
42	IWEB 863	215 x 150 x 80	G
30	IWEB 864	215 x 150 x 110	G
40	IWEB 1084	250 x 200 x 110	G
28	IWEB 1086	250 x 200 x 160	G
24	IWEB 1296	310 x 230 x 145	G
18	IWEB 15127	390 x 310 x 180	G

QTY/ PACK	CAT. NOS	CABLE DIAMETER (mm)	MOUNTING HOLE (mm)	COLOR
100	OWPG-07	3-6	13	G
100	OWPG-09	4-8	16	G
100	OWPG-11	5-10	19	G
100	OWPG-13.5	7-12	20	G
50	OWPG-16	10-14	23	G
50	OWPG-21	13 - 18	29	G
50	OWPG-29	18 - 25	37	G
10	OWPG-36	22 - 32	48	G
10	OWPG-42	30 - 38	54	G
10	OWPG-48	34 - 44	60	G

- ABS thermoplastic
- IP56 Dust/weatherproof
- High impact strength
- Temperature range from -5°C ~ +70°C
- Chemical resistance to aqueous acids, alkalis, seawater, concentrated phosphoric & hydrochloric acid
- Polycarbonate version available upon request

## Index of protection Degrees of protection provided by enclosures for electrical equipment (IP code)

According to standards: IEC 60529, BS EN 60529 and NF EN 60529

1 <sup>st</sup> digit: protection against solid foreign objects			2 <sup>nd</sup> digit: protection against ingress of water			Additional letter: protection against access to hazardous parts		
IP	tests	protection	IP	tests	protection	IP	tests	protection
0		No protection	0		No protection			
1		Protected against solid bodies larger than 50 mm	1		Protected against vertically-falling drops of water (condensation)	A		The back of the hand remains remote from dangerous parts
			2		Protected against drops of water falling at up to 15° from the vertical			
2		Protected against solid bodies larger than 12.5 mm	3		Protected against drops of rain water at up to 60° from the vertical	B		The dangerous parts can not be touched when introducing a finger
			4		Protected against projections of water from all directions			
3		Protected against solid bodies larger than 2.5 mm	5		Protected against jets of water from all directions	C		The dangerous parts can not be touched when introducing a tool (eg a screwdriver)
			6		Protected against jets of water of similar force to heavy seas			
4		Protected against solid bodies larger than 1 mm	7		Protected against the effect of immersion	D		The dangerous parts can not be touched when introducing a wire
5		Protected against dust (no harmful deposit)	8		Protected against prolonged effects of immersion under pressure			
6		Completely protected against dust	9 9K <sup>(1)</sup>		Protected against high pressure and temperature water jets			

[1] In accordance to ISO 20653

Color = G-Grey



## TELEPHONE, MINI, MODULAR & ROUND TRUNKING

### Rectangular Telephone Trunking (Medium Duty)

QTY/ PACK	CAT. NOS	WxH (mm)	LENGTH (m)	COLOR
10	EWPT 12 G	50 x 25	3.65	G
10	EWPT 13 G	75 x 25	3.65	G
10	EWPT 14 G	100 x 25	3.65	G

### Rectangular Telephone Trunking (Heavy Duty)

QTY/ PACK	CAT. NOS	WxH (mm)	THICKNESS (mm)	LENGTH (m)	COLOR
10	EWUFD 223	50 x 25	2.3	2.9	W
10	EWUFD 325	75 x 25	2.5	2.9	W
10	EWUFD 427	100 x 25	2.7	2.9	W

### Trapezoidal Telephone Trunking (Very Heavy Duty)

QTY/ PACK	CAT. NOS	WxH (mm)	THICKNESS (mm)	LENGTH (m)	COLOR
10	EWUFDT 225	50 x 25	2.5	2.9	W
10	EWUFDT 332	75 x 25	3.2	2.9	W
10	EWUFDT 432	100 x 25	3.2	2.9	W

### Rectangular Telephone Trunking (Heavy Duty)

QTY/ PACK	CAT. NOS	WxH (mm)	THICKNESS (mm)	LENGTH (m)	COLOR
10	EWUFD 232H	50 x 38	3.2	2.9	W
10	EWUFD 332H	75 x 38	3.2	2.9	W
10	EWUFD 432H	100 x 38	3.2	2.9	W

### High Impact uPVC Mini Trunking

QTY/ PACK	CAT. NOS	WxH (mm)	LENGTH (m)	COLOR
160	EWMT 1020	20 x 10	1.83	W
120	EWMT 1327	27 x 13	1.83	W
120	EWMT 1330	30 x 13	1.83	W
80	EWMT 1640	40 x 16	1.83	W
80	EWMT 2040	40 x 20	1.83	W
60	EWMT 1650	50 x 16	1.83	W

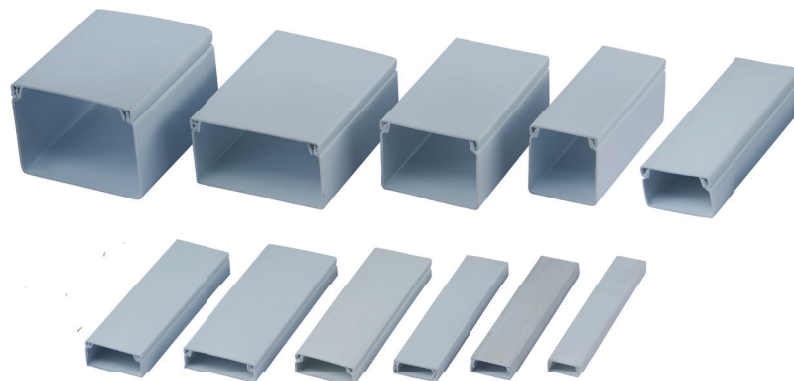
### High Impact uPVC Modular Trunking

QTY/ PACK	CAT. NOS	WxH (mm)	LENGTH (m)	COLOR
40	EWMT 3250	50 x 32	1.83	W
25	EWMT 5050	50 x 50	1.83	W
20	EWMT 5075	75 x 50	1.83	W
15	EWMT 50100	100 x 50	1.83	W
12	EWMT 75100	100 x 75	1.83	W
2	EWMT 100100	100 x 100	2.00	W
2	EWMT 100150	150 x 100	2.00	W
2	OWMT 55200	200 x 55	2.00	W
2	OWMT 100200	200 x 100	2.00	W

### Round Duct



QTY/ PACK	CAT. NOS	WxH (mm)	LENGTH (m)	COLOR
25	EWRD 30	30 x 8	1.83	G
25	EWRD 50	50 x 13	1.83	G
25	EWRD 70	70 x 15	1.83	G
12	EWRD 90	90 x 22	1.83	G



Color: W- White, G-Grey

